

Tweezers, weight grips, gloves, dusting brush



Tweezers

to be able to safely grip small test weights

For class	For weight	Length	Version	KERN	€
E1 - M3	1 mg - 200 g	105 mm	1 Stainless steel with silicone-coated tips	315-243	20,-
E1 - M3	500 g - 2 kg	250 mm	1 Stainless steel with silicone-coated tips	315-245	65,-
E1 - M3	≤ 5 g	130 mm	2 Stainless steel, curved, high-quality plastic tips	315-246	22,-
E1 - M3	≤ 5 g	136 mm	3 Stainless steel, straight, high quality plastic tips	315-247	22,-
E1 - M3	≤ 200 g	225 mm	4 Stainless steel, straight, high-quality plastic tips, with a special shape for gripping weights of various shapes and sizes	315-248	36,-
F2 - M3	1 mg - 200 g	100 mm	5 Stainless steel	335-240	18,-
E1 - M3	1 mg - 200 g	100 mm	6 Plastic	315-242	8,70

Weight grip
plastic coated

For class	For knob shaped weights	KERN	€
E1 - M3	2 kg	315-273	32,-
E1 - M3	5 kg	315-274	36,-
E1 - M3	10 kg	315-275	41,-
E1 - M3	20 kg	315-276	61,-



1 not appropriate for cast iron weights



Gloves

Cotton, 1 pair. Help to protect the test weights when being used daily, from grease from fingers, damp etc. Suitable for test weights up to 2 kg.

KERN	€
317-280	2,60



Gloves

Leather/cotton, 1 pair. Help to protect the test weights when being used daily, from grease from fingers, damp etc. Ideal for test weights from 2 kg.

KERN	€
317-290	6,60



Premium gloves

Nylon, 1 pair. Particularly elastic, one size fits all, with special fingertip coating to ensure a safe grip. Helps to protect the test weights in everyday use from grease from fingers, damp etc. Ideal for all test weights.

KERN	€
317-281	9,-



Dusting brush

to clean the weights

KERN	€
318-270	7,20



Bellows

for cleaning weights

KERN	€
318-271	9,60



Microfibre cloth

for cleaning weights

KERN	€
318-272	6,90

Bestel via e-mail naar metil@rycobel.com of online via www.metil-industrie.com

Meer informatie: +32 56 78 21 70 (Algemeen), 0800 665 52 22 (Nederland), +33 (0)3 28 40 22 17 (Frankrijk), +49 221 27 799 971 (Duitsland)

Boxes for individual weights



For weights ≤ 500 g,
OIML class E1 – F1

For weights ≥ 1 kg,
OIML class E1 – F1

Box material: Wood, lined, suitable for single weights, KERN No. 307, 316, 317, 326, 327



For weights ≤ 500 g,
OIML class F2 – M3

For weights ≥ 1 kg,
OIML class F2 – M3

Box material: Wood, not lined, suitable for single weights, KERN No. 337, 347, 357, 367

❗ not suitable for cast iron weights



For test weights ≥ 10 kg,
OIML class F1 – M1

Box material: Wood, lined/not lined, suitable for single weights, KERN No. 327, 337, 347

❗ not suitable for cast iron weights

Wooden box, lined

for single weights E1 – F1

For weights	KERN	€
-	-	-
1 g	317-010-100	30,-
2 g	317-020-100	30,-
5 g	317-030-100	32,-
10 g	317-040-100	30,-
20 g	317-050-100	31,-
50 g	317-060-100	32,-
100 g	317-070-100	35,-
200 g	317-080-100	36,-
500 g	317-090-100	46,-
1 kg	317-110-100	68,-
2 kg	317-120-100	69,-
5 kg	317-130-100	101,-
10 kg	317-140-100	122,-
20 kg	317-150-100	630,-
50 kg	317-160-100	880,-

Wooden box, not lined

for single weights F2 – M3

For weights	KERN	€
mg	338-090-200	34,-
1 g	337-010-200	21,-
2 g	337-020-200	17,-
5 g	337-030-200	18,-
10 g	337-040-200	18,-
20 g	337-050-200	18,-
50 g	337-060-200	20,-
100 g	337-070-200	24,-
200 g	337-080-200	25,-
500 g	337-090-200	29,-
1 kg	337-110-200	43,-
2 kg	337-120-200	47,-
5 kg	337-130-200	92,-
10 kg	337-140-200	93,-
20 kg	337-150-200	390,-
50 kg	337-160-200	610,-

Wooden box, not lined

for test weights F1 – M1

For weights	KERN	€
10 kg	337-141-200	360,-
20 kg	337-151-200	390,-
50 kg	337-161-200	610,-

Wooden box, lined

for test weights F1 – M1

For weights	KERN	€
10 kg	337-141-100	340,-
20 kg	337-151-100	370,-
50 kg	337-161-100	570,-



For weights ≤ 5 kg, OIML class E1 – M3

Box material: Aluminium protected, lined, suitable for mg and single weights, KERN No. 307, 308, 316, 317, 318, 326, 327, 328, 337, 338, 347, 348, 357, 367

❗ not suitable for cast iron weights

Aluminium protected box, lined

for individual weights, knob and compact shape, class E1 – M3

For weights	KERN	€
mg	317-009-600	14,-
1 g	317-010-600	14,-
2 g	317-020-600	17,-
5 g	317-030-600	15,-
10 g	317-040-600	15,-
20 g	317-050-600	15,-
50 g	317-060-600	14,-
100 g	317-070-600	14,-
200 g	317-080-600	14,-
500 g	317-090-600	19,-
1 kg	317-110-600	27,-
2 kg	317-120-600	32,-
5 kg	317-130-600	53,-



For weights ≤ 10 kg, OIML class E1 – M3

Box material: Aluminium protected, lined, suitable for single weights, KERN No. 307, 316, 317, 326, 327, 337, 347, 357, 367

❗ not suitable for cast iron weights

Aluminium protected box, lined

for individual weights, knob and compact shape, class E1 – M3

For weights	KERN	€
10 kg	317-140-600	75,-
20 kg	317-150-600	105,-
50 kg	317-160-600	305,-



For block weight ≥ 5 kg, OIML class F1 – M3

Box material: Aluminium protected, lined, suitable for block weights, KERN No. 326, 336, 346, 356, 366

Aluminium protected box, lined

for individual weights F1 – M3

For weights	KERN	€
5 kg	346-060-600	80,-
10 kg	346-070-600	104,-
20 kg	346-080-600	152,-
50 kg	346-090-600	171,-

Carrying cases/boxes for individual weight sets

Individual weight sets:

You can create your own "tailor-made" individual weight sets yourself.

KERN will customise your own personal wooden box/plastic carrying case.

The largest individual weight which will fit is given in the table.

Sample order:

Your individual weight set (class F1):

1 × 50 g, 2 × 100 g, 1 × 500 g, 2 × 1 kg, 1 × 2 kg.


The correct individual box is **KERN No. 313-080-400** (plastic) or

KERN No. 315-070-100 (wood, lined)




Plastic case

for individual weight sets classes E1 – M3, not appropriate for cast iron weights


Largest possible weight	KERN		€
≤ 500 g	313-050-400		166,-
≤ 5 kg	313-080-400		320,-

Wooden case

lined, for individual weight sets classes E1 – F1
* with side handles

Largest possible weight	KERN		€
≤ 200 g	315-040-100		235,-
≤ 1 kg	315-060-100		350,-
≤ 2 kg	315-070-100		405,-
≤ 5 kg*	315-080-100		510,-
≤ 10 kg*	315-090-100		560,-

Wooden case not lined, for individual weight set classes F2 – M3, not appropriate for cast iron weights * with side handles

Largest possible weight	KERN		€
≤ 200 g	335-040-200		154,-
≤ 500 g	335-050-200		154,-
≤ 1 kg	335-060-200		215,-
≤ 2 kg	335-070-200		225,-
≤ 5 kg*	335-080-200		340,-
≤ 10 kg*	335-090-200		330,-

Carrying cases for standard weight sets




Fig. shows
313-010-600

Aluminium protected case for safe storage and transportation under harsh industrial conditions.


Plastic case for weight sets

with standard denomination classes E1 – M3, not appropriate for cast iron weights

Largest possible weight	KERN		€
≤ 500 g	313-052-400		102,-
≤ 5 kg	313-082-400		205,-

Aluminium protected case

for weight sets with standard denomination classes E1 – M2
*no handle **1 front handle ***2 side handles

For weights	For class	KERN		€
1 mg - 500 mg	E1 - M1	313-010-600*		92,-
1 mg - 50 g	E1 - M1	313-020-600*		94,-
1 mg - 100 g	E1 - M1	313-030-600*		103,-
1 mg - 200 g	E1 - M1	313-040-600*		109,-
1 mg - 500 g	E1 - M1	313-050-600*		132,-
1 mg - 1 kg	E1 - M1	313-060-600*		161,-
1 mg - 2 kg	E1 - M1	313-070-600**		189,-
1 mg - 5 kg	E1 - M1	313-080-600***		250,-
1 mg - 10 kg	E1 - M1	313-090-600***		330,-
1 g - 50 g	E1 - M2	314-020-600*		89,-
1 g - 100 g	E1 - M2	314-030-600*		98,-
1 g - 200 g	E1 - M2	314-040-600*		104,-
1 g - 500 g	E1 - M2	314-050-600*		127,-
1 g - 1 kg	E1 - M2	314-060-600*		156,-
1 g - 2 kg	E1 - M2	314-070-600*		184,-
1 g - 5 kg	E1 - M2	314-080-600***		245,-
1 g - 10 kg	E1 - M2	314-090-600***		330,-

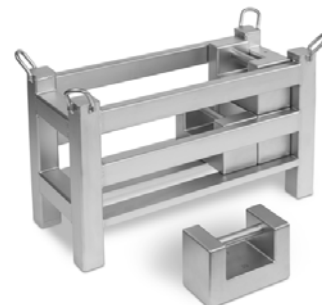
Bestel via e-mail naar metil@rycobel.com of online via www.metil-industrie.com

Meer informatie: +32 56 78 21 70 (Algemeen), 0800 665 52 22 (Nederland), +33 (0)3 28 40 22 17 (Frankrijk), +49 221 27 799 971 (Duitsland)

Weight containers for rectangular weights or other test weights, stainless steel glass bead blasted, adjusted to OIML class M1

Preconfigured weight containers for testing high-load floor scales, pallet scales, pallet truck scales, crane scales, etc. This can also be used for storing the weights. This means the weight container and the weights can be placed on the balance in one go, saving you time and money. The weight container is adjusted to OIML accuracy class M1. Other OIML accuracy classes are also available, please ask.

Weight of the weight container, OIML class M1	Tol +/- g	Possible equipment, rectangular weights, OIML class M1	Maximum total weight (weight container incl. weights)	Price (weight container excluding weights)	
				KERN	€
20 kg	1,0	5 × 20 kg	120 kg	346-022-005	1610,-
40 kg	1,5	8 × 20 kg	200 kg	346-042-008	2070,-
50 kg	2,5	10 × 20 kg	250 kg	346-052-010	2070,-
50 kg	2,5	4 × 50 kg	250 kg	346-055-004	2070,-
50 kg	2,5	9 × 50 kg	500 kg	346-055-009	2070,-
60 kg	3,0	8 × 50 kg and 2 × 20 kg	500 kg	346-065-009	2250,-



Weight of the weight container, OIML class M1	Tol +/- g	Possible equipment, test weights, OIML class M1	Maximum total weight (weight container incl. weights)	Price (weight container excluding weights)	
				KERN	€
20 kg	1,0	max. 10 × 10 kg or 5 × 20 kg	120 kg	347-022-005	1610,-
40 kg	2,0	max. 16 × 10 kg or 8 × 20 kg	200 kg	347-042-008	1890,-
50 kg	2,5	max. 20 × 10 kg or 10 × 20 kg	250 kg	347-052-010	2070,-
60 kg	3,0	max. 22 × 20 kg	500 kg	347-062-022	2250,-



Individual weight containers for rectangular weights or other test weights, calibrated to OIML class M1

Individual weight carriers for testing high capacity floor scales, pallet scales, pallet truck scales, crane scales, etc. This can also be used for storing the weights. This means the weight container and the weights can be placed on the scale in one go, saving time and money.

The weight container can be calibrated to OIML accuracy classes M1 - M3. On request, KERN will make you a "tailor-made" weight carrier to your specifications.

Example:

3 block weights	each 50 kg, class M1	=	150 kg
1 weight container	each 50 kg, class M1	=	50 kg
Total		=	200 kg

Weight of the weight container, OIML class M1	Price	
	KERN	€
Individual weight container for rectangular weights	346-000-000	Price on request
Individual weight container for test weights	347-000-000	Price on request



Example illustration